



Description

The globe valves in brass serie VGO are used in heating, refrigeration and air-conditioning systems for the flow control of heated or chilled water for domestic and industrial applications. The valves are motorized by the electric actuators serie AVGO at 1500 N.

Technical specifications

Fluids type	Hot and cold water (with glycol max. 50%)
Fluid temperature	2...120°C
Nominal pressure	1600 kPa max (16 bar)
Control flow characteristics	Equal-percentage (linear on angle way)
Rangeability	50 : 1
Leakage	< 0,05% of KVs
Connections	BSP female thread
Stroke	22 mm
Installation position	Horizontal or vertical
Maintenance	Free
Body	Brass
Plug	Brass
Valve stem	Brass
Stem packing	PTFE
Dimensions and weight	See schedule



	Models		DN	KVs	Max diff. pressure (bar) (*)			Stroke mm	Actuator
	2 ways	3 ways			2 ways	3 ways (M)	3 ways (D)		
VGO265	VGO365	65	52	3.5	3.5	2	20	AVGO15(M)	
VGO280	VGO380	80	80	2.5	2.5	2	20	AVGO15(M)	

(*) The values in the brackets are the max. differential pressure when valve is fully closed and actuator is still able to open or close the valve with security. In order to avoid wear between plug and seat, we recommend not to overcome the nominal values.

Caution

Before valves are mounted, make sure that pipes are clean, free from welding slags, that are perfectly lined up with valve body and not subjected to vibrations. The valve can be mounted in any position except upside-down. While assembling, respect the flow directions indicated by the arrows located on the valve body.

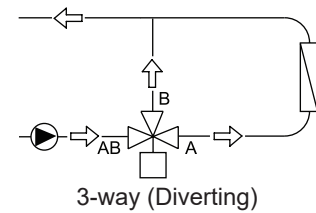
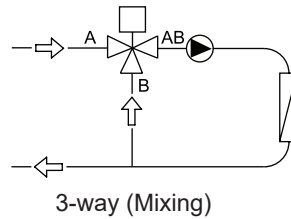
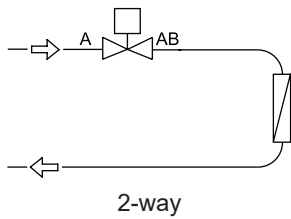
In the 2-way valve, when stem is up, the direct way is open, with stem down direct way is closed.

In the 3-way valve, when stem is up, the direct way is closed, with stem down direct way is open.

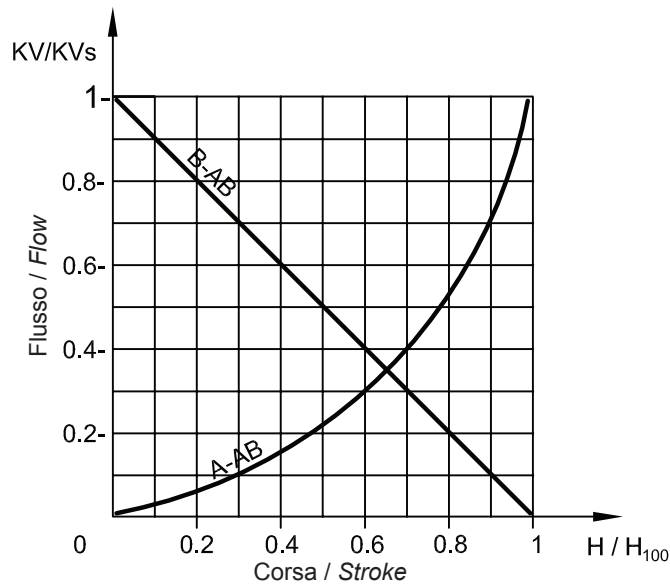
VGO65-80



Installation



Control flow characteristics



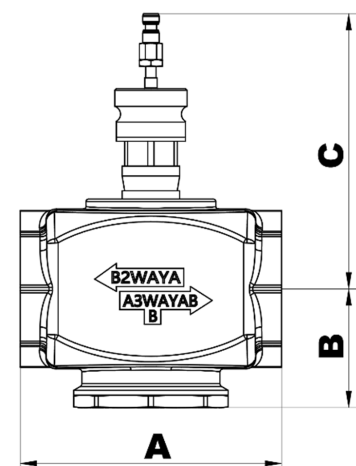
3-way

A-AB equal-percentage way
 B-AB bypass linear way
 3-way used as mixing inlet in A and B, outlet AB
 3-way used as diverting inlet in AB, outlet from A and B

AB way constant flow
A way variable flow
B (bypass) way variable flow

Dimensions and weights

Models	Thread	Dimensions (mm)			Weight kg
		A	B	C	
VGO265	G2 1/2	159	72	167	4.37
VGO365	G2 1/2	159	72	167	4.65
VGO280	G3	180	85	179.5	5.8
VGO380	G3	180	104	179.5	6.2



The contents are subject to revision or change without notice.