

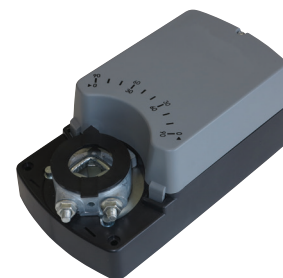
Damper actuators, 16 Nm

S16

Description

Damper actuator serie S16 to operate and position air dampers in HVAC systems.

- For air dampers up to approx. 3 m²
- Nominal voltage 24 Vac/dc and 100...230 Vac
- Control: Open-close or 3-point and proportional
- Characteristics: universal spindle clamp for easy direct mounting, shaft dimensions Ø 10 to 20 mm round / 10 to 16 mm square, minimum shaft length 50 mm, anti-rotation bracket provided for stability, manual over ride by push button, selectable direction of rotation, adjustable angle of rotation, parallel connection up to 10 actuators, manual override with push-button possible (the gear train is disengaged for as long as the button is pressed), the actuator is overload protected, requires no limit switches and automatically stops when the end is reached.



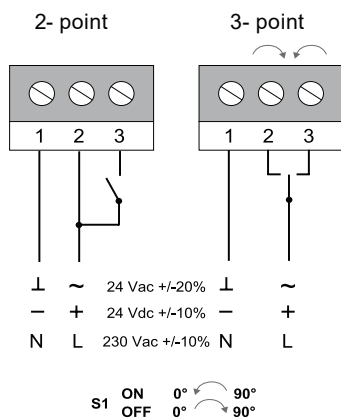
Technical features

Actuator model		S16A	S16B	S16AM	S16BM
Damper area	m ²			3	
Nominal torque	Nm			16	
Power supply	V	24 AC/DC	100...240 AC	24 AC/DC	100...240 AC
Frequency	Hz			50/60	
Power consumption					
- in operation	W			4.5	
- at rest	W	0.5	0.7	0.5	0.7
- for wire sizing	VA			7.0	
Running time	s			70...100	
Sound power level	db (A)			45	
Control signal		2-3 point	2-3 point	0(2)...10 V DC 0(4)...20 mA	0(2)...10 V DC 0(4)...20 mA
Auxiliary switch rating				3 (1.5) A, 230 V AC	
Life Cycle	cycles			60.000	
Rotation angle					
- operating				0-90°	
- limitation				5-85° (steps of 5°)	
Protection class		III	II	III	II
Protection degree				IP54	
Working range °C				-20...+70° C	
Working range RH				5...95% RH, non-condensating	
Storage temperature				-40...+80° C	
Maintenance				free	
Weight	g			<1300	
Standards				CE-conformity, RoHs	
Option				suffix S for models with 2 SPDT auxiliary switches	

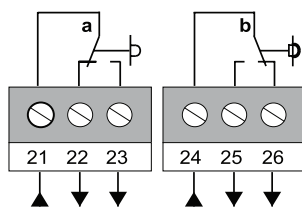


Electrical wirings for models at 2 / 3 points

Wiring diagram

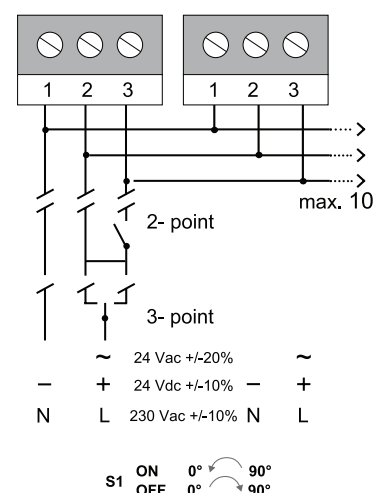


Auxiliary switches



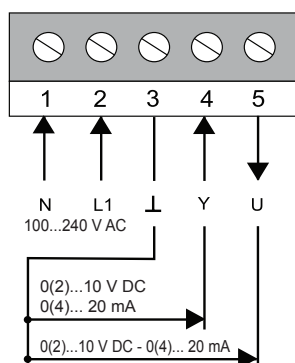
3 (1,5) A 230 Vac
 actuator in position 0°

Parallel connections

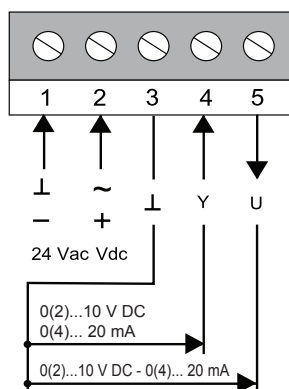


Electrical wirings for proportional models

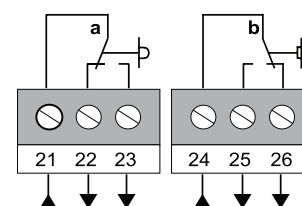
Wiring diagram 230 V AC



Wiring diagram 24 V AC



Auxiliary switches



3 (1,5) A 230 Vac
 actuator in position 0°

Settings DIP switches

DIP 1
 Feedback signal



OFF: 0(2)...10 V
 ON: 0(4)...20 mA

DIP 2
 Input signal starting point



OFF: 0...10 V o 0...20 mA
 ON: 2...10 V o 4...20 mA

DIP 3
 Input signal



OFF: 0(2)...10 V
 ON: 0(4)...20 mA

DIP 4
 Rotation direction



OFF: With the increase of the signal,
 the actuator rotate counterclockwise
 ON: With the increase of the signal,
 the actuator rotate clockwise

S2
 Rotation direction



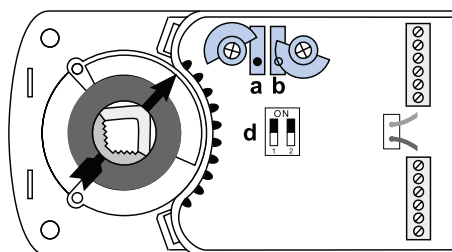
option

S16

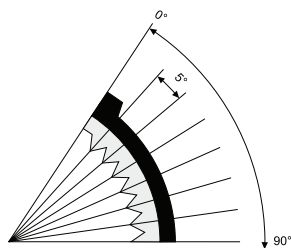


Auxiliary switch adjustment

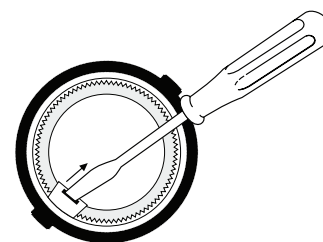
Factory setting:
switch a at 10°
switch b at 80°
The switching position can
be changed manually.



Angle of rotation limiting



Adapter release



■ Dimensions (mm)

