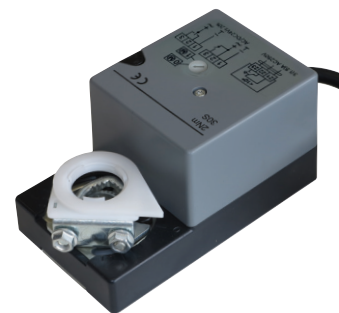


Description

Damper actuator serie S2 to operate and position air dampers in HVAC systems.

- For air dampers up to approx. 0.5 m²
- Nominal voltage 24 Vac/dc and 230 Vac
- Control: Open-close or 3-point and proportional
- Characteristics: universal spindle clamp for easy direct mounting, shaft dimensions Ø 6 to 15,5 mm round / 5 to 11 mm square, minimum shaft length 35 mm, anti-rotation bracket provided for stability, adjustable angle of rotation with mechanical end stops, 0,9 m cable connection, manual override with push-button possible (the gear train is disengaged for as long as the button is pressed), the actuator is overload protected, requires no limit switches and automatically stops when the end is reached. Operate the manual control without applying excessive force, keeping the release button pressed for the entire stroke of movement. Rotate slowly and smoothly, avoiding jerky movements or sudden changes in direction.



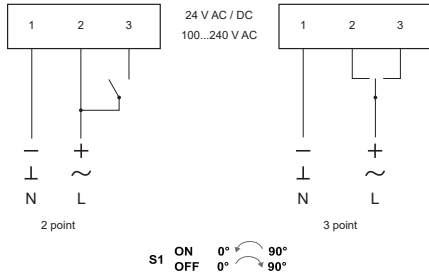
Technical features

Actuator model		S2A	S2B	S2AM	S2BM
Damper area	m ²		0.5		
Nominal torque	Nm		2		
Power supply	V	24 AC/DC	100...240 AC	24 AC/DC	100...240 AC
Frequency	Hz		50/60		
Power consumption					
- in operation	W	2,0	2,8	2,0	2,8
- at rest	W	0,5	0,7	0,5	0,7
- for wire sizing	VA		4,5		
Running time	s		20...45		
Sound power level	max. db (A)		45		
Control signal		2-3 point	2-3 point	0...10 V DC	0...10 V DC
Auxiliary switch rating			3 (1,5) A, 250 VAC		
Life Cycle	cycles		60.000		
Rotation angle			max.95°		
Rotation way			L/R switch		
Protection class			II		
Protection degree			IP54		
Working range °C			-20...+70° C		
Working range % RH			5...95% RH, non-condensating		
Storage temperature			-40...+70° C		
Maintenance			free		
Weight	g		600		
Standards			CE-conformity, RoHs		
Option			suffix S for models with 1 SPDT auxiliary switch		

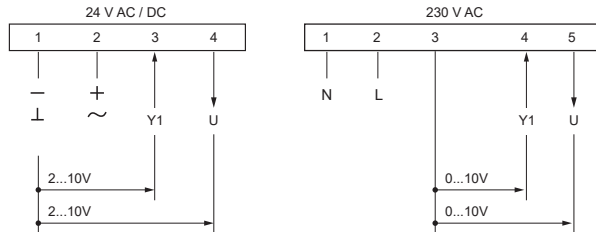


Electrical wirings

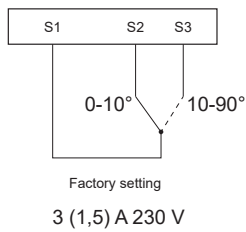
Wiring diagram



Wiring diagram
proportional

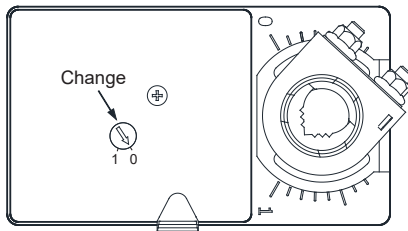


Auxiliary switch



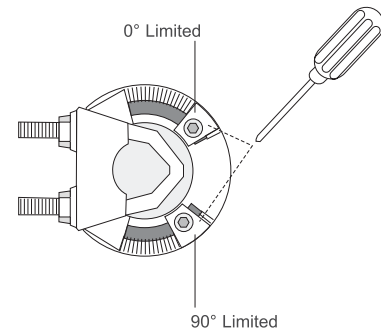
Setting

Change of rotation way



To reverse the rotation, use the dedicated tool (if supplied) without applying force.

Angle of rotation limiting



Dimensions (mm)

