



Description

The differential pressure transmitter serie PTG is used to measure differential pressure, overpressure and vacuum of gaseous, non-aggressive media. It provides 2 pressure ranges and 2 output signals, which are selectable by jumper. Possible fields of application are building automation and air conditioning systems, overpressure measurement in clean rooms and laboratories, measurement of constant pressure in VAV applications, dynamic filter and ventilator monitoring.

Technical specifications

Medium	Air, non-combustible and non-aggressive gases
Measurement range	See schedule
Linearity and hysteresis error	≤ ±1% of FS
Repetition accuracy	≤ ±0.2 % of FS
Response time	0,1 s or 1 s, selectable by jumper
Position dependence	≤ ±0,02% of FS/g
Long term stability	< ±0,5% final value/year
Offset calibration	The output signal can be calibrated to zero by pressing the M key.
Supply voltage	18...30 V AC / DC
Output signal	3-wire connection, with switching output. The factory setting is 0...10 V DC, but can be changed to 4-20 mA by removing the jumper. 2-wire connection 4...20 mA version is available upon request.
Switching output	npn transistor output for max. 30 V DC/100 mA
Electrical connection	Screw terminal block for wires and strands up to 1,5 mm ²
Display, optional	LED, 4 digits
Housing material	Housing with process connection P2 (-) Base part with process connection P1 (+)
Cable conduit	M16x1,5 connection made of polyamide
Housing dimensions	approx. 81x83x41 mm
Weight	approx. 125 g
Protection class	IP65
Working humidity	0...95% RH, non-condensing
Working temperature	0...+50°C
Storage temperature	-10...+70°C
Accessories	Connection set (PVC-hose 2 m Ø 6 with 2 ABS nippels and 4 screws) included
Installation	Screw fastening
Installation position	any
Standards	CE-conformity, RoHS
Optional	UL, conforms to UL Std. 61010-1, conforms to CSA Std. C22.2 No. 61010-1

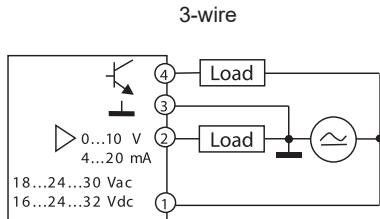


Models	Measuring range	Max pressure
PTG1	-50...0...+50 Pa	60 kPa
PTG2	0...100 Pa, 0...250 Pa	60 kPa
PTG3	0...500 Pa, 0...1000 Pa	75 kPa
PTG4	0...1 kPa, 0...2,5 kPa	85 kPa
PTG5	0...5 kPa, 0...10 kPa	85 kPa
PTG6	0...25 kPa, 0...50 kPa	200 kPa
PTG9	-100...0...+100 Pa	60 kPa

Suffix A offset autocalibration
 Suffix D for models with display
 Suffix UL for models UL / CSA approval

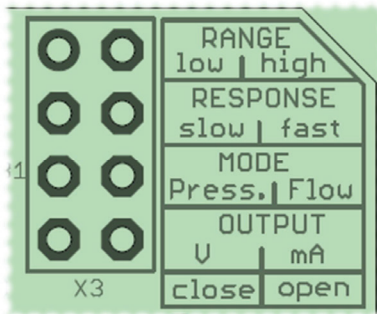


Electrical wirings



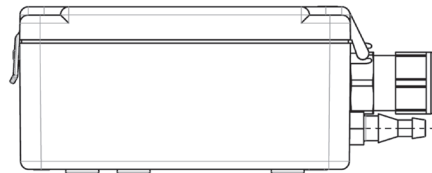
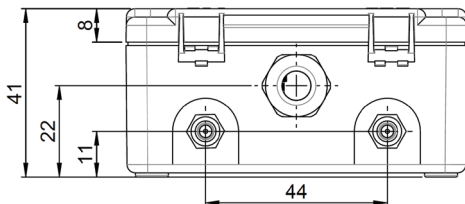
4	SA	Switching output, npn
3	G0	Ground G N D
2	Y	Output signal 0 ... 10V / 4 ... 20 mA
1	G	Supply voltage 24 VAC / VDC

Settings

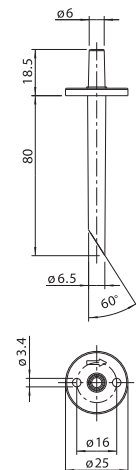
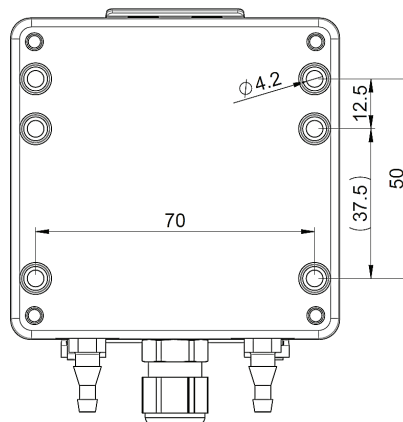
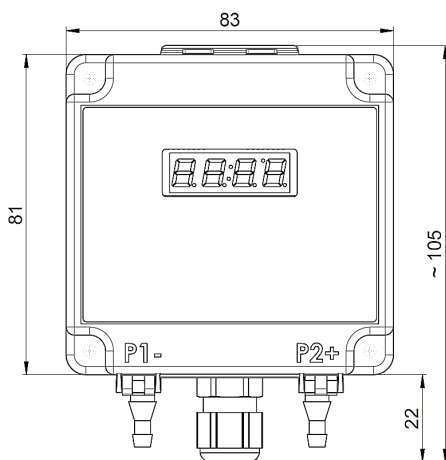


	Jumper (switched)	Aperto (open)
Range pressione (Pressure range)	Bassa (low)	Alta (high)
Risposta (Response)	Lenta (slow)	Veloce (fast)
Funzionamento (Mode)	Lineare (linear)	Quadratico (square root)
Segnale di uscita (Output signal)	0...10 V	4...20 mA

Dimensions (mm)



ABS nippel
(part of connection set APA3)





■ Programming version without display

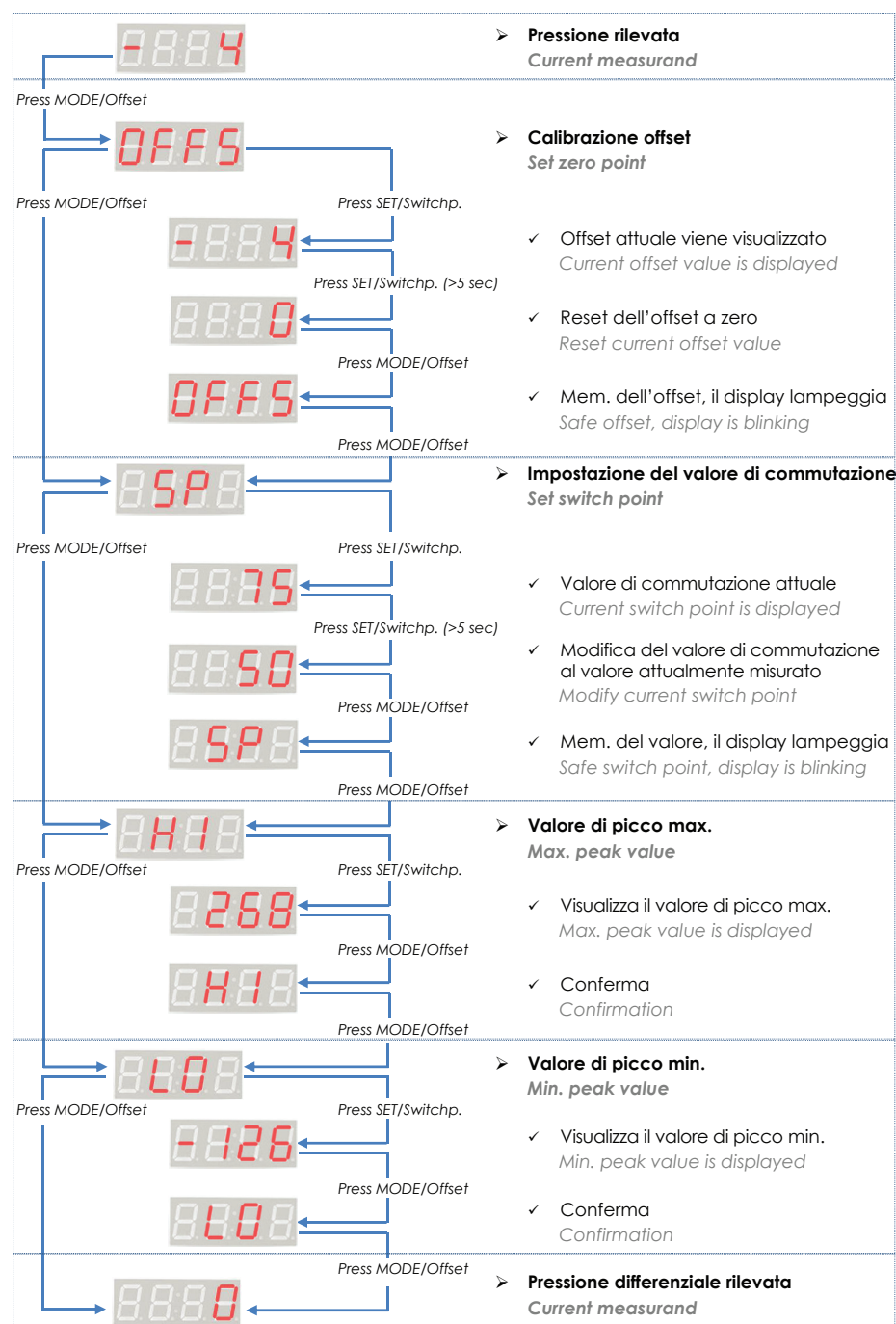
In the version without display, you can program the switching value by acting in this way:

- 1 Apply the pressure or differential pressure at which you want the system switches
- 2 Press the „S“ button for 5 seconds until the LED flashes quickly.

At this point the switching value is saved and the LED will light while reaching the set pressure.

For recalibration remove both pressure tube, press the button „MODE/Offset“ for 5 seconds and than replase the pressure tube.

■ Programming display version



* Free from pipes or remove the cap from the two nozzles before proceeding with the offset re-calibration.